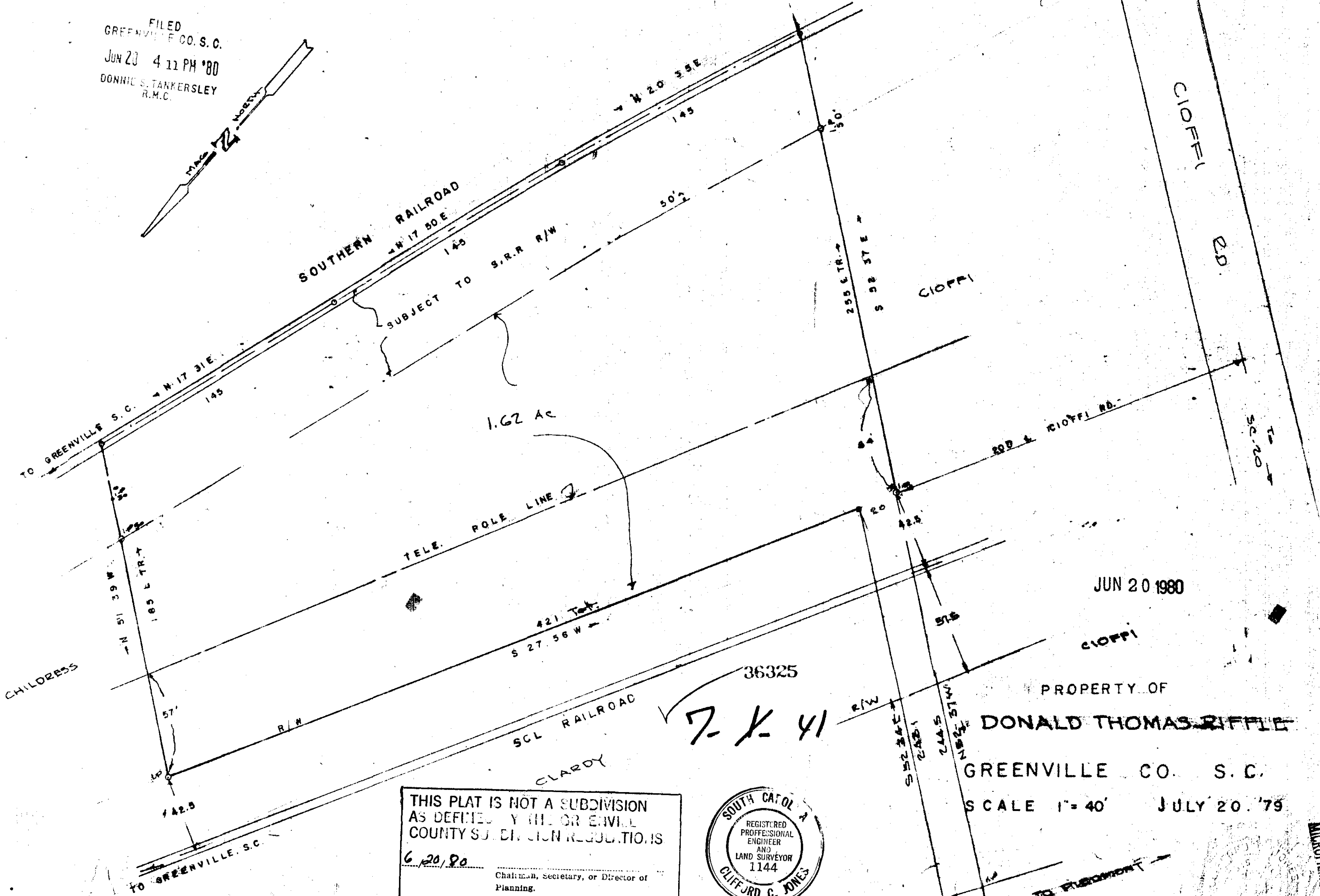
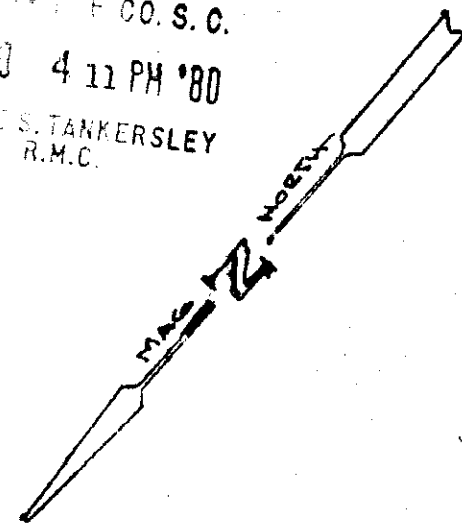


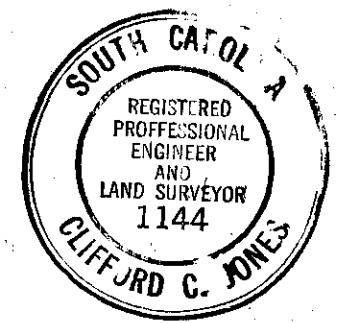
FILED
GREENVILLE CO. S.C.
JUN 20 4 11 PM '80
DONNIE S. TANKERSLEY
R.M.C.



JUN 20 1980

PROPERTY OF
DONALD THOMAS RIFFLE
GREENVILLE CO. S.C.
SCALE 1" = 40' JULY 20, '79

THIS PLAT IS NOT A SUBDIVISION
AS DEFINED BY THE GREENVILLE
COUNTY SUBDIVISION REGULATIONS
6/20/80
Chairman, Secretary, or Director of
Planning.
Greenville County Planning Commission



JONES ENGINEERING SERVICES

TO FREDMONT
JUN 20 1980

MICROFILMED

S.00CI